

THE ROUGE RIVER PROJECT
A WORLD CLASS EFFORT



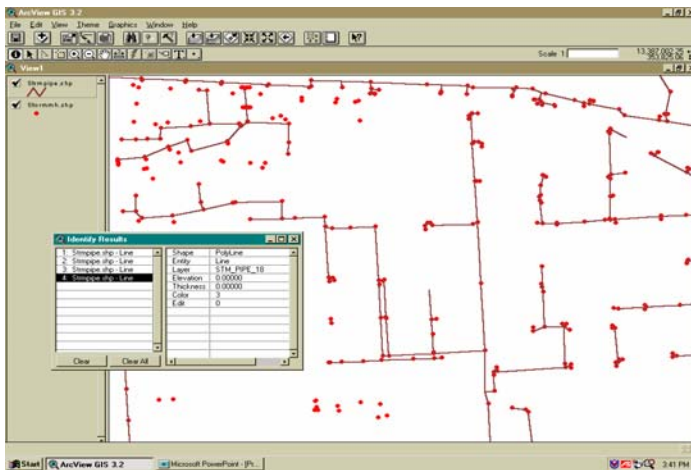
BRINGING OUR RIVER BACK TO LIFE

Fundamental GIS Development Project, GIS Round II, City of Farmington, Michigan

A publication of the Wayne County Rouge River National Wet Weather Demonstration Project
Information Date: July 2000

Objective

The purpose of the project was to establish the fundamental GIS capabilities necessary for planning and implementing programs to support the Michigan Department of Environmental Quality General Permit for Storm Water Discharge which supports the Rouge River restoration activities.



City of Farmington Storm Sewers
and Example Data

Owner/Location

City of Farmington, Michigan

Dates

Start February 1999
Complete March 2000

Total Project Cost

\$54,603

Demonstration Aspects

- The Michigan Department of Environmental Quality General Permit for Storm Water Discharge which supports the Rouge River restoration activities requires the development of sub-watershed management plans to delineate the program to restore the Rouge River.
- A watershed-wide, parcel based GIS system had been determined necessary to support the watershed management activities. This project demonstrates how the City of Farmington developed and implemented its fundamental Geographic Information System.

Project Highlights

- Developed the fundamental elements of a GIS for the City including software training, hardware/software procurement, and support in the use of GIS applications
- Developed basic data to support the watershed application of GIS including base data, storm sewer locations and features, and digital geographic data

Major Elements

- Completion of base map data conversion from Oakland County at the parcel level.
- Procurement of GIS consulting services to assist in the development of fundamental elements of GIS.
- Updated existing data and collected supplemental GPS data as needed for use in watershed management programs.

Procured hardware and software and necessary training.

Project Results

A fundamental GIS was developed and implemented to support the watershed approach being used in the restoration of the Rouge River. This included not only data development but the training of staff for long term use of the system.

To obtain further information on the Rouge Project, including documents, maps and general information, visit us at:

<http://www.rougeriver.com>

AKNOWLEDGEMENT

The Rouge River National Wet Weather Demonstration Project is funded, in part, by the United States Environmental Protection Agency (EPA) Grant #X995743-01, 02, 03 and 04 and #C995743-01.