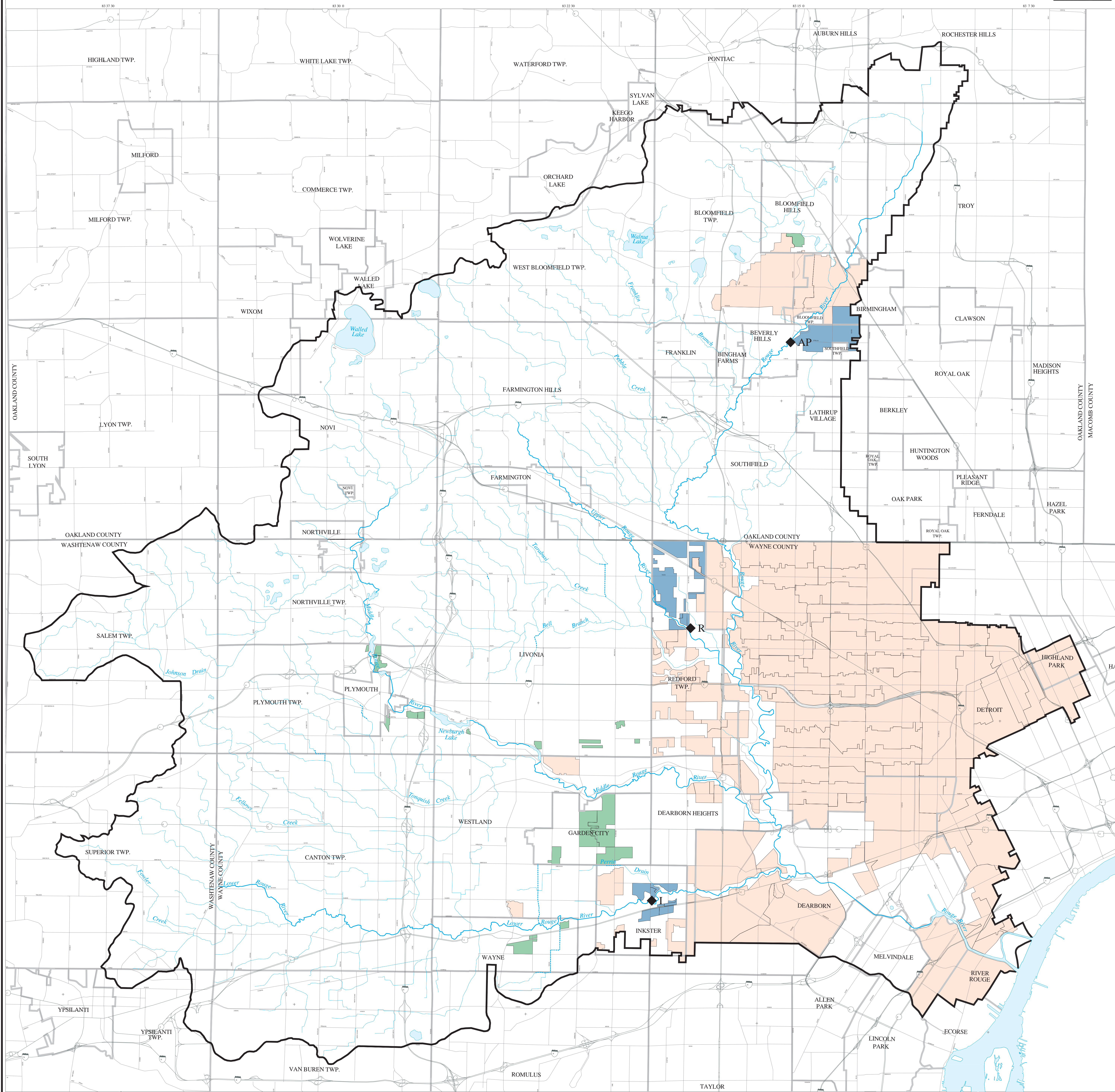


# ROUGE RIVER WATERSHED CSO Drainage Area Update - Through May 1997

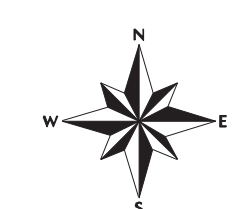


## LEGEND

- Rouge watershed boundary
- - - County boundaries
- City/township boundaries
- Highways
- County roads
- Rouge River major branches
- Tributaries
- ..... Enclosed drains
- ◆ CSO Demonstration treatment facilities
- AP – Acacia Park retention basin
- I – Inkster retention basin
- R – Redford retention basin

CSO Drainage Area Status as of 12/31/96

- CSO areas separated
- CSO areas controlled by basins
- CSO areas remaining



1 inch = 1 mile



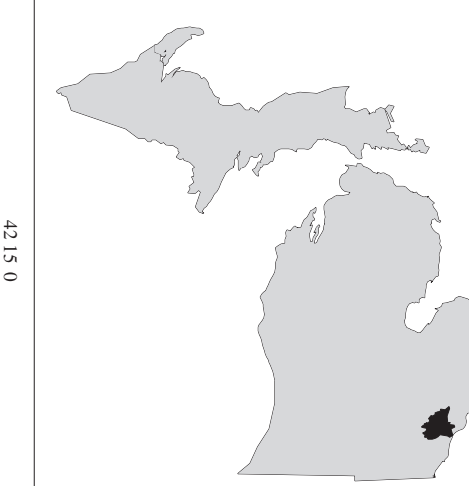
MAP PROJECTION:  
Michigan State Plane Coordinate System, south zone (Lambert Conformal Conic Projection), FIPS zone 2113,  
NAD 27, feet.

DATA SOURCES:  
Rouge watershed boundary – RPO Modeling Team data, May 1994.  
Highways – MDNR MIRS data, 1985, from 1:24,000 USGS quadrangles, photorevised 1973-1983.  
County roads – MDNR MIRS data, 1985, from 1:24,000 USGS quadrangles, photorevised 1973-1983.  
County boundaries – MDNR MIRS data, 1985, from 1:24,000 USGS quadrangles, photorevised 1973-1983.  
City/township boundaries – MDNR MIRS data, 1985, from 1:24,000 USGS quadrangles, photorevised 1973-1983.  
Rouge River major branches & tributaries – EPA Reach data, 1991, from 1:100,000 USGS DLGs, 1983.  
Modified by RPO Modeling Team, January 1994.  
Enclosed drains – RPO Modeling Team data (modifications to Reach), January 1994.  
CSO area status – RPO CSO Team data, May 1997.

Planned CSO Treatment Facilities – RPO CSO Team, January 1994.

For additional information regarding the source of RPO derived data, please contact the Wayne County  
Rouge Program Office. Data depicted on this map were derived from source maps with various scales  
and levels of accuracy. This information is illustrated here for general reference purposes only.  
Map symbology is not to scale and therefore does not depict site specific conditions. This map  
should not be used to evaluate information related to individual parcels of property.

The Rouge River National Wet Weather Demonstration Project is funded, in part, by the  
United States Environmental Protection Agency grant #X995743-01.



## ROUGE RIVER NATIONAL WET WEATHER DEMONSTRATION PROJECT

Wayne County Rouge Program Office (RPO)  
220 Bagley Avenue  
Michigan Building, Suite 920  
Detroit, Michigan 48226  
(313) 961-0700